

1

2

3

4

5

6

7

8

NOTES:

1. MATERIAL:  
FITTING: 304/304L STANDARD; 316/316L WHEN -316 IS ADDED TO END OF P.N.  
DISC: 316/316L

2. ASSEMBLE PER OPMF-02.3

3. DESIGN: PER B31.3 CRITERIA

4. WELD AS FOLLOWS:  
1" HEX: WELD PER WPS BW-4200-MANUAL OR WPS-BW-100SINTERED-AUTO  
  
1 3/4" HEX: WELD PER WPS BW-4200-MANUAL OR WPS-BW-175SINTERED-AUTO

5. ANNEAL PER DPU01-01 PROCESS NUMBER 19004-60 UNLESS OTHERWISE SPECIFIED ON PURCHASE ORDER.

6. WORKSMANSHIP PER DMF01-24:  
PARTS TO BE FREE OF GOUGES, DINGS, AND DENTS VISABLE TO THE UNAIDED EYE.  
  
WHEN THE PART CONTAINS A CONICAL SEALING SURFACE, THE SURFACE MUST BE FREE OF FLAWS, NICKS AND CHATTER MARKS WHEN VIEWED UNDER AMPLE LIGHTING WITH THE UNAIDED EYE. SURFACE BURNISHING IS PERMITTABLE PRIOR TO SHIPPING.

7. OPERATING PRESSURE (FOR ENGINEERING REFERENCE ONLY)  
1.00 INCH HEX = 6000 PSI  
1.75 INCH HEX = 3000 PSI

8. MICRON RATING  
SEE TABLE 1 FOR MICRON CODE.  
ASSEMBLIES TO BE BUBBLE POINT TESTED PER OPMF-63

9. CLEANING  
CLEAN ASSEMBLY PRE AND POST ANNEALING PER OPMF-500.

10. END FITTING SIZE AND TYPES  
SEE TABLE 2 FOR FITTING SIZE AND TABLE 3 FOR FITTING TYPE

11. PART MARKING:  
MARK PER OPMF-126 "NFC PART MARKING GUIDELINES"

12. PRODUCT NUMBERING  
  
42XXAT-(B) (C) FOR IDENTICAL END FITTINGS  
42XXAT-(B) (C) -(B) (C) FOR DIFFERENT END FITTINGS  
42XXAT-(B) (C) -(D) FOR ACCESSORY OPTION  
  
WHERE,  
XX STANDS FOR MICRON CODE  
(B) STANDS FOR FITTING SIZE  
(C) STANDS FOR FITTING TYPE  
(D) STANDS FOR ACCESSORY OPTION

TABLE 3 - END FITTING CODES

FITTING TYPE (C)	DESCRIPTION
M	MALE NPT
P	FEMALE NPT
T	37 DEG FLAIR
B	FEMALE O-RING
D	MALE O-RING
C	COMPRESSION
FS	FACE SEAL
AS 1098	37 DEG FLAIR WITH AS1098 CUT

TABLE 4 - ACCESSORY

ACCESSORY OPTION (D)	DESCRIPTION
LW	LOCKWIRE HOLES

UNLESS OTHERWISE SPECIFIED  
DIMENSIONS ARE IN INCHES

TOLERANCES ON:  
2 PLACE DECIMAL: .XX +/-0.01  
3 PLACE DECIMAL: .XXX +/-0.005  
ANGULAR: +/- 0.5°  
-----  
PART TO BE FREE OF BURRS  
REMOVE SHARP EDGES (FILLET 0.005" - 0.020") MEASUREMENT NOT REQUIRED  
SURFACE FINISH 125 Ra UNLESS NOTED, VISUAL INSPECTION ONLY REQUIRED  
IF PART REVISION IS NOT SPECIFIED, PART REV. MATCHES DRAWING REV.  
NFC WORKMANSHIP STANDARD DMF01-24 APPLIES

REVISIONS

DRAWING REV.	DESCRIPTION	DATE	APPROVED
G	PER ECO 1633: UPDATED TABLE 1 TO SHOW MOTT MEDIA GRADES ONLY	4/4/18	KH
H	ECO 1671: UPDATED NUT AND SLEEVE TO MONROE AEROSPACE PN	5/30/18	DJ
J	ECO 1691: 4200 WELD WPS AND PQR CLEANUP	10/5/18	DJ
I	ECO 2321: WPS AUTO UPDATE	8/28/19	JB

TABLE 1 - MICRON CODE

CODE XX	PARTICLE SIZE [um] WITH INITIAL 99.9% CAPTURE EFFICIENCY (REF)	
	LIQUID	AIR
0.2	1.4	0.2
0.5	2.2	0.3
1	3.3	0.7
2	9	2
5	13	5
10	20	13
20	35	20

A = INITIAL EFFICIENCY IS GREATER THAN 99.9% FOR ALL PARTICLE SIZES

TABLE 2 - END FITTING SIZES

FITTING SIZE (B)	SIZE DESRIPTION FOR NPT	SIZE DESCRIPTION FOR ALL OTHER
1	1/8"	-
2	1/4"	1/8"
3	3/8"	3/16"
4	1/2"	1/4"
6	-	3/8"
8	-	1/2"
10	-	5/8"
12	-	3/4"

NORMAN

FILTERS

NORMAN FILTER COMPANY

9850 SOUTH INDUSTRIAL DRIVE - BRIDGEVIEW, IL 60455

PHONE (708)430-4000 - FAX (708)430-5961

TITLE:  
FILTER, INLINE, 4200 SERIES SINTERED DISC

PART NUMBER:  
TABULATED

PART REV:  
I

DWG NO.  
42XXATASSM

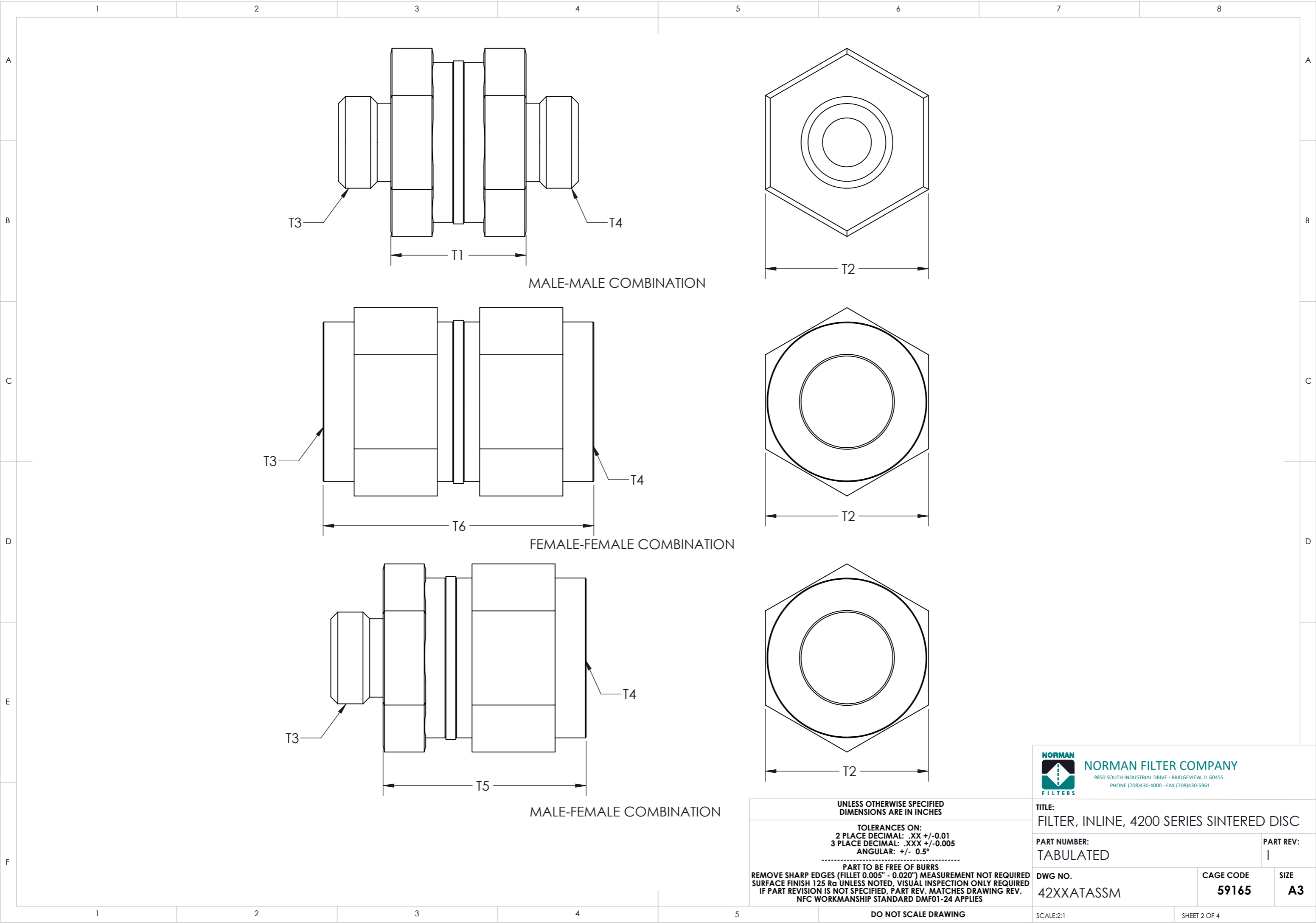
CAGE CODE  
59165

SIZE  
A3

DO NOT SCALE DRAWING

SCALE:1:16

SHEET 1 OF 4



**NORMAN FILTER COMPANY**  
9850 SOUTH INDUSTRIAL DRIVE - BRIDGEVIEW, IL 60455  
PHONE (708)430-4000 - FAX (708)430-5961

**TITLE:**  
FILTER, INLINE, 4200 SERIES SINTERED DISC

<b>PART NUMBER:</b> TABULATED	<b>PART REV:</b> 1
----------------------------------	-----------------------

<b>DWG NO.</b> 42XXATASSM	<b>CAGE CODE</b> 59165	<b>SIZE</b> A3
------------------------------	---------------------------	-------------------

SCALE:2:1	SHEET 2 OF 4
-----------	--------------

UNLESS OTHERWISE SPECIFIED  
DIMENSIONS ARE IN INCHES


TOLERANCES ON:  
2 PLACE DECIMAL: .XX +/-0.01  
3 PLACE DECIMAL: .XXX +/-0.005  
ANGULAR: +/- 0.5°

-----  
PART TO BE FREE OF BURRS  
REMOVE SHARP EDGES (FILLET 0.005" - 0.020") MEASUREMENT NOT REQUIRED  
SURFACE FINISH 125 Ra UNLESS NOTED, VISUAL INSPECTION ONLY REQUIRED  
IF PART REVISION IS NOT SPECIFIED, PART REV. MATCHES DRAWING REV.  
NFC WORKMANSHIP STANDARD DMF01-24 APPLIES

DO NOT SCALE DRAWING

1		2		3		4		5		6		7		8	
A	DIMENSION		T1	T2	T3	T4	T5	T6							
	TYPE		MALE-MALE	HEX SIZE	INLET FITTING	OUTLET FITTING	MALE-FEMALE	FEMALE-FEMALE							
	DESCRIPTION		FLAT TO FLAT	HEX SIZE	INLET FITTING	OUTLET FITTING	FLAT TO FITTING	FITTING TO FITTING							
	TOLERANCE		±.030	±.01	GO/NO GO GAGE	GO/NO GO GAGE	±.030	±.030							
B	42XXAT-1MP		-	1.00	1/8-27 NPT	1/8-27 NPT	-	1.125							
	42XXAT-1M-4T		.650	1.00	1/8-27 NPT	AS4395-4	-	-							
	42XXAT-1PP		-	1.00	1/8-27 NPT	1/8-27 NPT	-	1.600							
	42XXAT-1P-4T		-	1.00	1/8-27 NPT	AS4395-4	1.125	-							
	42XXAT-2MM		.650	1.00	1/4-18 NPT	1/4-18 NPT	-	-							
	4XXAT-2MP		-	1.00	1/4-18 NPT	1/4-18 NPT	-	1.125							
	42XXAT-2M-4T		.650	1.00	1/4-18 NPT	AS4395-4	-	-							
	42XXAT-2M-6T		.650	1.00	1/4-18 NPT	AS4395-6	-	-							
	42XXAT-2PP		-	1.00	1/4-18 NPT	1/4-18 NPT	-	1.600							
	42XXAT-2P-4T		-	1.00	1/4-18 NPT	AS4395-4	1.125	-							
	42XXAT-2TT		.650	1.00	AS4395-2	AS4395-2	-	-							
	42XXAT-3PP		-	1.75	3/8-18 NPT	3/8-18 NPT	-	1.680							
C	42XXAT-3TT		.650	1.00	AS4395-3	AS4395-3	-	-							
	42XXAT-4T-6T		.650	1.00	AS4395-4	AS4395-6	-	-							
	42XXAT-4BB		-	1.00	AS5202-4	AS5202-4	-	1.600							
	42XXAT-4BD		-	1.00	AS5202-4	AS930-06	1.125	-							
	42XXAT-4BT		-	1.00	AS5202-4	AS4395-4	1.125	-							
	42XXAT-4DD		.650	1.00	AS930-4	AS930-4	-	-							
	42XXAT-4DT		.650	1.00	AS930-4	AS4395-4	-	-							
	42XXAT-4CC		.650	1.00	AS4375-4	AS4375-4	-	-							
	42XXAT-4MM		1.400	1.75	1/2-14 NPT	1/2-14 NPT	-	-							
	42XXAT-4PP		-	1.75	1/2-14 NPT	1/2-14 NPT	-	1.680							
	42XXAT-4TT		.650	1.00	AS4395-4	AS4395-4	-	-							
	42XXAT-6FS		.750	1.00	9/16-18 UNF 2A	9/16-18 UNF 2A	-	-							
D	42XXAT-4P-8T		-	1.75	1/2-14NPT	AS4395-8	1.540	-							
	42XXAT-6BT		-	1.00	AS5202-6	AS4395-6	1.125	-							
	42XXAT-6BD		-	1.00	AS5202-6	AS930-6	1.125	-							
	42XXAT-6BB		-	1.00	AS5202-6	AS5202-6	-	1.600							
	42XXAT-6DD		.650	1.00	AS930-6	AS930-6	-	-							
	42XXAT-6DT		.650	1.00	AS930-6	AS4395-6	-	-							
	42XXAT-6T-4B		-	1.00	AS4395-6	AS5202-4	-	1.125							
	42XXAT-6TT		.650	1.00	AS4395-6	AS4395-6	-	-							
	42XXAT-6CC		.650	1.00	AS4375-6	AS4375-6	-	-							
	42XXAT-8BB		-	1.75	AS5202-8	AS5202-8	-	1.980							
	42XXAT-8DD		1.400	1.75	AS930-8	AS930-8	-	-							
	42XXAT-8DT		1.400	1.75	AS930-8	AS4395-8	-	-							
E	42XXAT-8BT		-	1.75	AS5202-8	AS4395-8	1.690	-							
	42XXAT-8TT		1.400	1.75	AS4395-8	AS4395-8	-	-							
	42XXAT-12TT		1.400	1.75	AS4395-12	AS4395-12	-	-							
F							UNLESS OTHERWISE SPECIFIED DIMENSIONS ARE IN INCHES								
							TOLERANCES ON: 2 PLACE DECIMAL: .XX +/-0.01 3 PLACE DECIMAL: .XXX +/-0.005 ANGULAR: +/- 0.5°								
							PART TO BE FREE OF BURRS REMOVE SHARP EDGES (FILLET 0.005" - 0.020") MEASUREMENT NOT REQUIRED SURFACE FINISH 125 Ra UNLESS NOTED, VISUAL INSPECTION ONLY REQUIRED IF PART REVISION IS NOT SPECIFIED, PART REV. MATCHES DRAWING REV. NFC WORKMANSHIP STANDARD DMF01-24 APPLIES								

FITTING		THREAD GAGE	
AS930-4		7/16-20 UNJF-3A	
AS930-6		9/16-18 UNJF-3A	
AS930-8		3/4-16 UNJF-3A	
AS930-12		1 1/16-12 UNJ-3A	
AS4375-4		7/16-20 UNJF-3A	
AS4375-6		9/16-18 UNJF-3A	
AS4395-2		5/16-24 UNFJ-3A	
AS4395-3		3/8-24 UNJF-3A	
AS4395-4		7/16-20 UNJF-3A	
AS4395-6		9/16-18 UNJF-3A	
AS4395-8		3/4-16 UNJF-3A	
AS-4395-12		1 1/16-12 UNJ-3A	
AS-4395-16		1 5/16-12 UNJ-3A	
AS5202-4		7/16-20 UNJF-3B	
AS5202-6		9/16-18 UNJF-3B	
AS5202-8		3/4-16 UNJF-3B	
AS5202-12		1 1/16-12 UNJ-3B	
AS5202-16		1 5/16-12 UNJ-3B	



**NORMAN FILTER COMPANY**  
9850 SOUTH INDUSTRIAL DRIVE - BRIDGEVIEW, IL 60455  
PHONE (708)430-4000 - FAX (708)430-5961

TITLE:  
FILTER, INLINE, 4200 SERIES SINTERED DISC

PART NUMBER:  
TABULATED

PART REV:  
I

DWG NO.  
42XXATASSM

CAGE CODE  
59165

SIZE  
A3

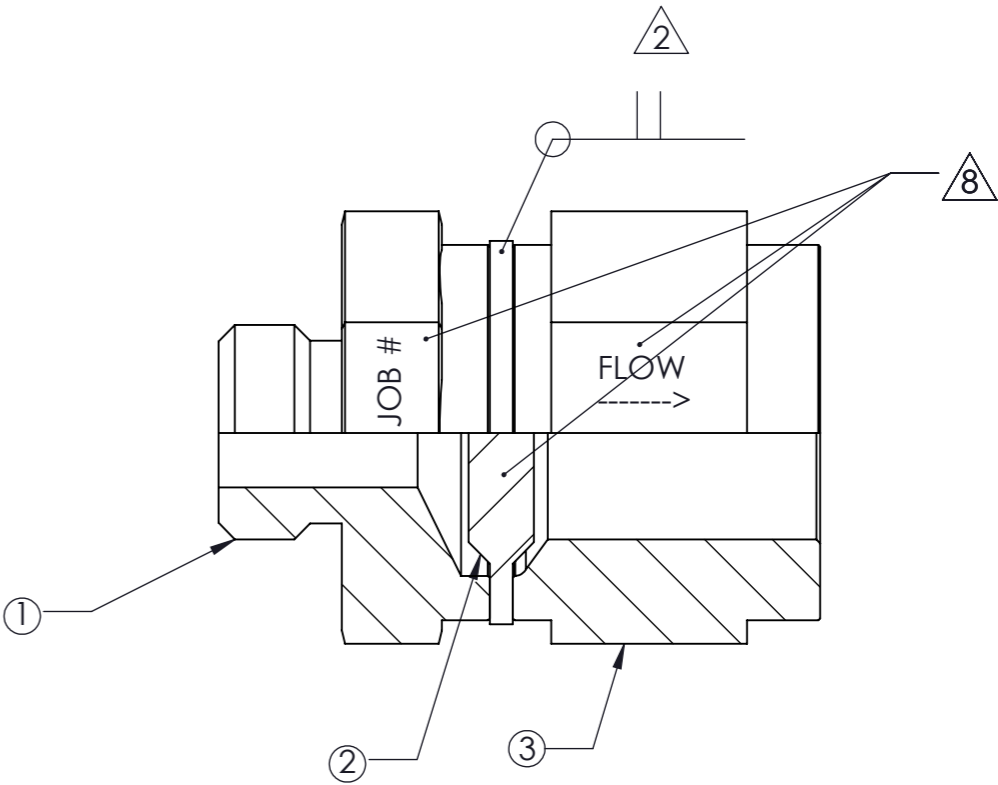
DO NOT SCALE DRAWING

SCALE:1:16

SHEET 3 OF 4

TYPICAL BILL OF MATERIAL, WELD DETAIL, AND PART MARKING

ASSEMBLY P.N	INLET FITTING P.N. ①	SINTERED DISC P.N. ② WHERE XX IS MICRON CODE	OUTLET FITTING P.N. ③
42XXAT-1MP	42T-1M	F-4173-4-XXABSF	42T-1P
42XXAT-1M-4T	42T-1M	F-4173-4-XXABSF	42T-4T
42XXAT-1PP	42T-1P	F-4173-4-XXABSF	42T-1P
42XXAT-1P-4T	42T-1P	F-4173-4-XXABSF	42T-4T
42XXAT-2MM	42T-2M	F-4173-4-XXABSF	42T-2M
4XXAT-2MP	42T-2M	F-4173-4-XXABSF	42T-2P
42XXAT-2M-4T	42T-2M	F-4173-4-XXABSF	42T-4T
42XXAT-2M-6T	42T-2M	F-4173-4-XXABSF	42T-6T
42XXAT-2PP	42T-2P	F-4173-4-XXABSF	42T-2P
42XXAT-2P-4T	42T-2P	F-4173-4-XXABSF	42T-4T
42XXAT-2TT	42T-2T	F-4173-4-XXABSF	42T-2T
42XXAT-3PP	42T-3P	F-4173-6-XXABSF	42T-3P
42XXAT-3TT	42T-3T	F-4173-4-XXABSF	42T-3T
42XXAT-4T-6T	42T-4T	F-4173-4-XXABSF	42T-6T
42XXAT-4BB	42T-4B	F-4173-4-XXABSF	42T-4B
42XXAT-4BD	42T-4B	F-4173-4-XXABSF	42T-4D
42XXAT-4BT	42T-4B	F-4173-4-XXABSF	42T-4T
42XXAT-4DD	42T-4D	F-4173-4-XXABSF	42T-4D
42XXAT-4DT	42T-4D	F-4173-4-XXABSF	42T-4T
**42XXAT-4CC	42T-4C	F-4173-4-XXABSF	42T-4C
42XXAT-4MM	42T-4M	F-4173-6-XXABSF	42T-4M
42XXAT-4PP	42T-4P	F-4173-6-XXABSF	42T-4P
42XXAT-4TT	42T-4T	F-4173-4-XXABSF	42T-4T
42XXAT-6FS	42T-6FS	F-4173-4-XXABSF	42T-6FS
42XXAT-4P-8T	42T-4P	F-4173-6-XXABSF	42T-8T
42XXAT-6BT	42T-6B	F-4173-4-XXABSF	42T-6T
42XXAT-6BD	42T-6B	F-4173-4-XXABSF	42T-6D
42XXAT-6BB	42T-6B	F-4173-4-XXABSF	42T-6B
42XXAT-6DD	42T-6D	F-4173-4-XXABSF	42T-6D
42XXAT-6DT	42T-6D	F-4173-4-XXABSF	42T-6T
42XXAT-6T-4B	42T-6T	F-4173-4-XXABSF	42T-4B
42XXAT-6TT	42T-6T	F-4173-4-XXABSF	42T-6T
**42XXAT-6CC	42T-6C	F-4173-4-XXABSF	42T-6C
42XXAT-8BB	42T-8B	F-4173-6-XXABSF	42T-8B
42XXAT-8DD	42T-8D	F-4173-6-XXABSF	42T-8D
42XXAT-8DT	42T-8D	F-4173-6-XXABSF	42T-8T
42XXAT-8BT	42T-8B	F-4173-6-XXABSF	42T-8T
42XXAT-8TT	42T-8T	F-4173-6-XXABSF	42T-8T
42XXAT-12TT	42T-12T	F-4173-6-XXABSF	42T-12T



\*-ROUTER WILL CONTROL B.O.M. FOR PRODUCTION PARTS  
\*\*-COMPRESSION FITTING ASSEMBLIES WILL REQUIRE NUT AND SLEEVE

**COMPRESSION NUT & FERRULES		
ASSEMBLY	NUT	SLEEVE
42XXT-4CC	MS21921-4J	MS21922-4C
42XXT-6CC	MS21921-6J	MS21922-6C



UNLESS OTHERWISE SPECIFIED DIMENSIONS ARE IN INCHES		TITLE: FILTER, INLINE, 4200 SERIES SINTERED DISC	
TOLERANCES ON: 2 PLACE DECIMAL: .XX +/-0.01 3 PLACE DECIMAL: .XXX +/-0.005 ANGULAR: +/- 0.5° ----- PART TO BE FREE OF BURRS REMOVE SHARP EDGES (FILLET 0.005" - 0.020") MEASUREMENT NOT REQUIRED SURFACE FINISH 125 Ra UNLESS NOTED, VISUAL INSPECTION ONLY REQUIRED IF PART REVISION IS NOT SPECIFIED, PART REV. MATCHES DRAWING REV. NFC WORKMANSHIP STANDARD DMF01-24 APPLIES		PART NUMBER: TABULATED	PART REV: 1
DWG NO. 42XXATASSM		CAGE CODE 59165	SIZE A3
DO NOT SCALE DRAWING		SCALE:2:1	SHEET 4 OF 4