

1

2

3

4

5

6

7

8

NOTES:

1. MATERIAL:  
FITTING: 304/304L STANDARD; 316/316L WHEN -316 IS ADDED TO END OF P.N.  
DISC: 316/316L STANDARD; 304L WHEN SPECIFIED. SEE ROUTER FOR PART MAKEUP.  
DISC WIRE SCREEN MAKE UP PER DEN02-04.

2. ASSEMBLE PER OPMF-02.3

3. DESIGN: PER B31.3 CRITERIA; MIN WALL THICKNESS SEE SHEET 3

4. WELD AS FOLLOWS:  
1" HEX: WELD PER WPS BW-4200-MANUAL OR WPS-4200-AUTOMATIC-100  
1 3/4" HEX: WELD PER WPS BW-4200-MANUAL OR WPS-4200-AUTOMATIC-175

5. ANNEAL PER DPU01-01 PROCESS NUMBER 19004-60 UNLESS OTHERWISE SPECIFIED ON PURCHASE ORDER.

6. WORKSMANSHIP PER DMF01-24:  
PARTS TO BE FREE OF GOUGES, DINGS, AND DENTS VISABLE TO THE UNAIDED EYE.  
  
WHEN THE PART CONTAINS A CONICAL SEALING SURFACE, THE SURFACE MUST BE FREE OF FLAWS, NICKS AND CHATTER MARKS WHEN VIEWED UNDER AMPLE LIGHTING WITH THE UNAIDED EYE. SURFACE BURNISHING IS PERMITTABLE PRIOR TO SHIPPING.

7. OPERATING AND COLLAPSE PRESSURE (FOR ENGINEERING REFERENCE ONLY)  
1.00 INCH HEX = 6000 PSI - COLLAPSE PRESSURE 50 PSID  
1.75 INCH HEX = 3000 PSI - COLLAPSE PRESSURE 50 PSID

8. MICRON RATING  
SEE TABLE 1 FOR MICRON CODE; MEDIA DEFINED BY DEN02-01, DEN02-04.  
ASSEMBLIES TO BE BUBBLE POINT TESTED PER DEN02-12

9. CLEANING  
CLEAN ASSEMBLY PRE AND POST ANNEALING PER OPMF-500.

10. END FITTING SIZE AND TYPES  
SEE TABLE 2 FOR FITTING SIZE AND TABLE 3 FOR FITTING TYPE

11. PART MARKING:  
MARK PER OPMF-126 "NFC PART MARKING GUIDELINES"

12. FDS WELDING & INSPECTION  
1" HEX: WELD PER WPS-AUTO-FDS-100  
1 3/4" HEX: WELD PER WPS-AUTO-FDS-175  
RADIOGRAPHIC INSPECTION OF FDS WELD JOINT INSPECTION PER ASME BPVC SECTION VIII DIV 1 PARA UW-51 REQUIRED -SEE PAGE 3

13. PRODUCT NUMBERING  
42XXT-(B)(C)(C) FOR IDENTICAL END FITTINGS  
42XXT-(B)(C)-(B)(C) FOR DIFFERENT END FITTINGS  
**NOTE: FIRST FITTING IDENTIFIED IN SEQUENCE SHALL BE THE INLET FITTING FOR PART MARKING AND ASSEMBLY FUNCTIONS**  
42XXT-(B)(C)-(D) FOR ACCESSORY OPTIONS  
  
WHERE,  
XX STANDS FOR MICRON CODE  
(B) STANDS FOR FITTING SIZE  
(C) STANDS FOR FITTING TYPE  
(D) STANDS FOR ACCESSORY OPTION  
HEX SIZE SHALL BE IDENTICAL ON BOTH FITTINGS - SEE SHEET 2

REVISIONS

DRAWING REV.	DESCRIPTION	DATE	APPROVED
AD	ECO 2329; UPDATED WELD CALLOUT, ADDED FDS WELD INSPECTION	8/22/19	JB
AE	ECO 2356: ADDED END FITTING ORIENTATION	9/3/19	JB
AF	ECO 2387; ADDED 12 µm MEDIA GRADE	9/16/19	JB
AG	ECO 2371: UPDATED FDS OAL	12/23/19	JB
AG1	ECO 3236: UPDATED FDS OAL	8/17/20	WC

TABLE 1 - MICRON CODE

CODE XX	NOM.	ABS.
2X	2	10
02	2	12
05	5	18
10	10	25
20	20	40
40	40	75
75	75	100
100	100	150
200	200	300
CODE XX	FILTER RATING	
3EL4	3 um at 98% Efficiency	
5EL4	4 um at 98% Efficiency	
10EL4	8 um at 98% Efficiency	
20EL4	23 um at 98% Efficiency	
100AL3	103 um at 50% Efficiency	

TABLE 2 - END FITTING SIZES

FITTING SIZE (B)	SIZE DESRIPTION FOR NPT	SIZE DESCRIPTION FOR ALL OTHER
1	1/8"	-
2	1/4"	1/8"
3	3/8"	3/16"
4	1/2"	1/4"
6	-	3/8"
8	-	1/2"
10	-	5/8"
12	-	3/4"
16	-	1"

TABLE 3 - END FITTING CODES

FITTING TYPE (C)	DESCRIPTION
M	MALE NPT
P	FEMALE NPT
T	37 DEG FLAIR
B	FEMALE O-RING
D	MALE O-RING
C	COMPRESSION
FS	FACE SEAL

TABLE 4 - ACCESSORY

ACCESSORY OPTION (D)	DESCRIPTION
LW	LOCKWIRE HOLES
12 FDS	2000 PSID FILTER DISC SUPPORT
R	REINFORCED PER DEN02-04
AS 1098	37 DEG FLAIR WITH AS1098 CUT

UNLESS OTHERWISE SPECIFIED  
DIMENSIONS ARE IN INCHES

TOLERANCES ON:  
2 PLACE DECIMAL: .XX +/-0.01  
3 PLACE DECIMAL: .XXX +/-0.005  
ANGULAR: +/- 0.5°  
-----  
PART TO BE FREE OF BURRS  
REMOVE SHARP EDGES (FILLET 0.005" - 0.020") MEASUREMENT NOT REQUIRED  
SURFACE FINISH 125 Ra UNLESS NOTED, VISUAL INSPECTION ONLY REQUIRED  
IF PART REVISION IS NOT SPECIFIED, PART REV. MATCHES DRAWING REV.  
NFC WORKMANSHIP STANDARD DMF01-24 APPLIES

DO NOT SCALE DRAWING

NORMAN

FILTERS

NORMAN FILTER COMPANY

9850 SOUTH INDUSTRIAL DRIVE - BRIDGEVIEW, IL 60455  
PHONE (708)430-4000 - FAX (708)430-5961

TITLE:  
FILTER, INLINE, 4200 SERIES WIRE MESH

PART NUMBER:  
TABULATED

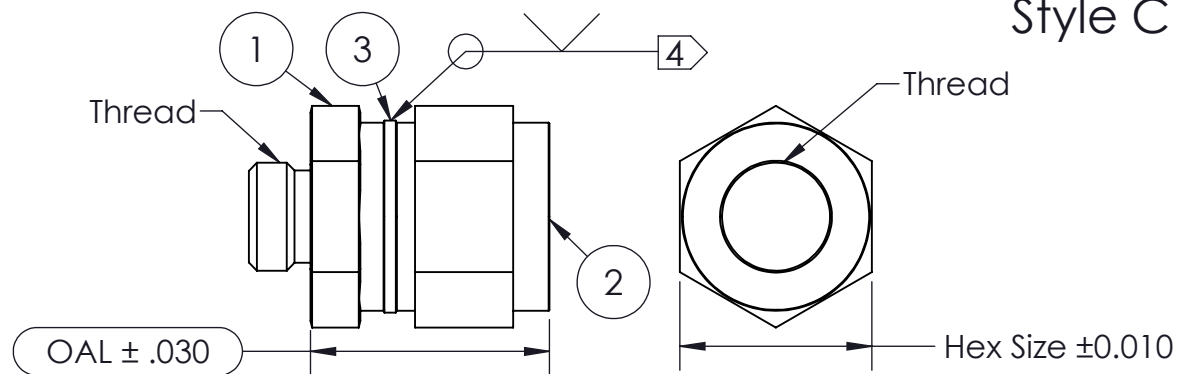
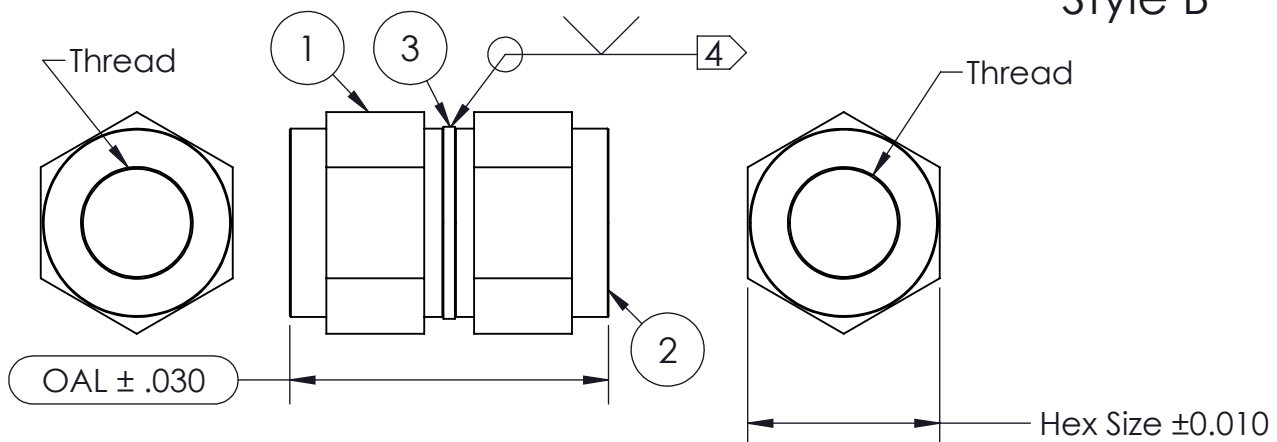
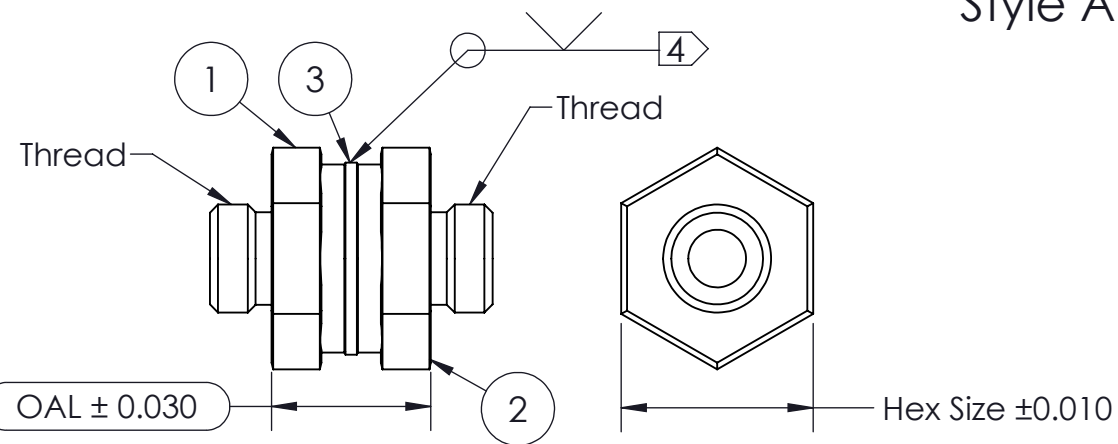
DWG NO.  
42XXTASSM

CAGE CODE  
59165

SIZE  
A3

SCALE:1:16

SHEET 1 OF 3



Configuration	
Style	Description
A	Male - Male
B	Female - Female
C*	Male - Female
*for dimensional purposes mirror versions are identical. EX: 42XXT-4BT is equivalent to 42XXT-4TB	

Bill of Material			
	End Fittings		Filter Disk
Item #	①	②	③
	42T- <span>10</span> <span>13</span>	42T- <span>10</span> <span>13</span>	See End Fitting Table
Example	42T-4B	42T-4T	F1-4173-4-XX

Compression Fitting BOM		
Fitting	Nut	Sleeve
4C	DNA-4-SS	DOS-4-SS
6C	DNA-6-SS	DOS-6-SS
8C	DNA-8-SS	DOS-8-SS

Parts with Compression Fittings require additional materials per end fitting

Style A

1" Hex - End Fitting Length							
Fitting Size	M	P	T	B	D	C	FS
1	0.325	0.800					
2	0.325	0.800	0.325		0.325		
3			0.325		0.325		
4			0.325	0.800	0.325	0.325	
6			0.325	0.800	0.325	0.325	0.375
Min. wall thickness: 0.178							
③ Filter Disk: F*-4173-4-XX							

1 3/4" Hex - End Fitting Length							
Fitting Size	M	P	T	B	D	C	FS
3		0.850					
4	0.710	0.850					
6							
8			0.710	1.000	0.710	.710	
12			0.710	1.200	0.710		
16			0.710	1.780	0.710		
Min. wall thickness: 0.235							
③ Filter Disk: F*-4173-6-XX							

End Fitting		Thread Gauge
Designation	Specification	
4D	AS930-4	7/16-20 UNJF-3A
6D	AS930-6	9/16-18 UNJF-3A
8D	AS930-8	3/4-16 UNJF-3A
12D	AS930-12	1 1/16-12 UNJ-3A
16D	AS930-16	1 5/16-12 UNJ-3A
4C	1/4" Compression	7/16-20 UNF-3A
6C	3/8" Compression	9/16-20 UN-2A
8C	1/2" Compression	3/4-20 UNEF-2A
2T	AS4395-2	5/16-24 UNFJ-3A
3T	AS4395-3	3/8-24 UNJF-3A
4T	AS4395-4	7/16-20 UNJF-3A
6T	AS4395-6	9/16-18 UNJF-3A
8T	AS4395-8	3/4-16 UNJF-3A
12T	AS-4395-12	1 1/16-12 UNJ-3A
16T	AS-4395-16	1 5/16-12 UNJ-3A
4B	AS5202-4	7/16-20 UNJF-3B
6B	AS5202-6	9/16-18 UNJF-3B
8B	AS5202-8	3/4-16 UNJF-3B
12B	AS5202-12	1 1/16-12 UNJ-3B
16B	AS5202-16	1 5/16-12 UNJ-3B

Dimensional Inspection				
	End Fitting Length	End Fitting Length	$\text{OAL} \pm 0.030$	Hex Size $\pm 0.010$
	See End Fitting Tables		Sum of End Fitting Length	See End Fitting Tables
Example	0.800	0.325	1.125	1.00
	Thread			
	Thread Type		Thread Type	
Example	7/16"-20 UNJF-3B		7/16-20 UNJF-3A	
Example Assembly P/N: 42XXT-4BT				

UNLESS OTHERWISE SPECIFIED  
DIMENSIONS ARE IN INCHES

TOLERANCES ON:  
2 PLACE DECIMAL: .XX +/-0.01  
3 PLACE DECIMAL: .XXX +/-0.005  
ANGULAR: +/- 0.5°

-----  
PART TO BE FREE OF BURRS  
REMOVE SHARP EDGES (Fillet 0.005" - 0.020") MEASUREMENT NOT REQUIRED  
SURFACE FINISH 125 Ra UNLESS NOTED, VISUAL INSPECTION ONLY REQUIRED  
IF PART REVISION IS NOT SPECIFIED, PART REV. MATCHES DRAWING REV.  
NFC WORKMANSHIP STANDARD DMF01-24 APPLIES

**NORMAN**  
  
**FILTERS**

**NORMAN FILTER COMPANY**  
 9850 SOUTH INDUSTRIAL DRIVE - BRIDGEVIEW, IL 60455  
 PHONE (708)430-4000 - FAX (708)430-5961

**TITLE:**  
FILTER, INLINE, 4200 SERIES WIRE MESH

PART NUMBER:  
TABULATED

D D	DWG NO. 42XXTASSM
--------	----------------------

CAGE CODE  
**59165**

**SIZE**  
**A3**

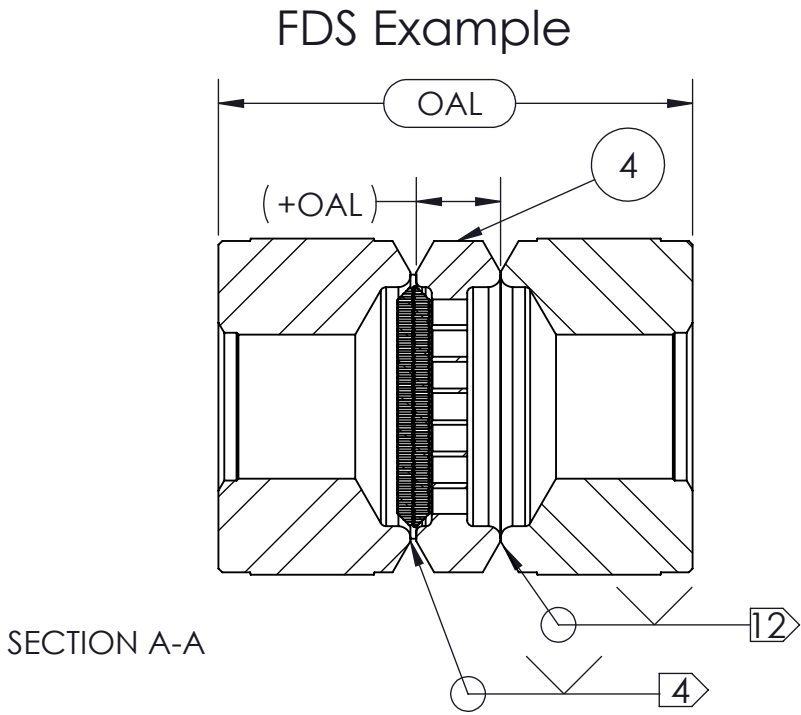
DO NOT SCALE DRAWING

SCALE:1:16

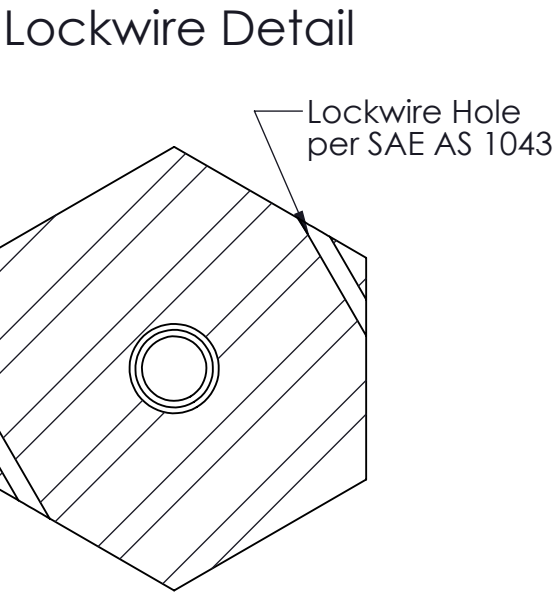
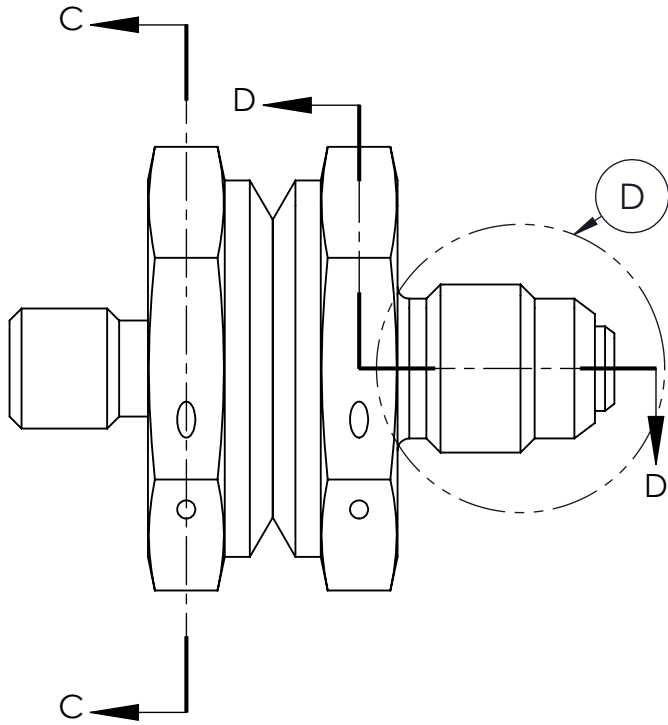
SHEET 2 OF 3

13 Accessory Table	
ACCESSORY OPTION	DESCRIPTION
LW	LOCKWIRE HOLES PER SAE AS 1043
FDS	2000 PSID FILTER DISC SUPPORT
R	REINFORCED PER DEN02-04
AS 1098	FITTING PER SAE AS 1098

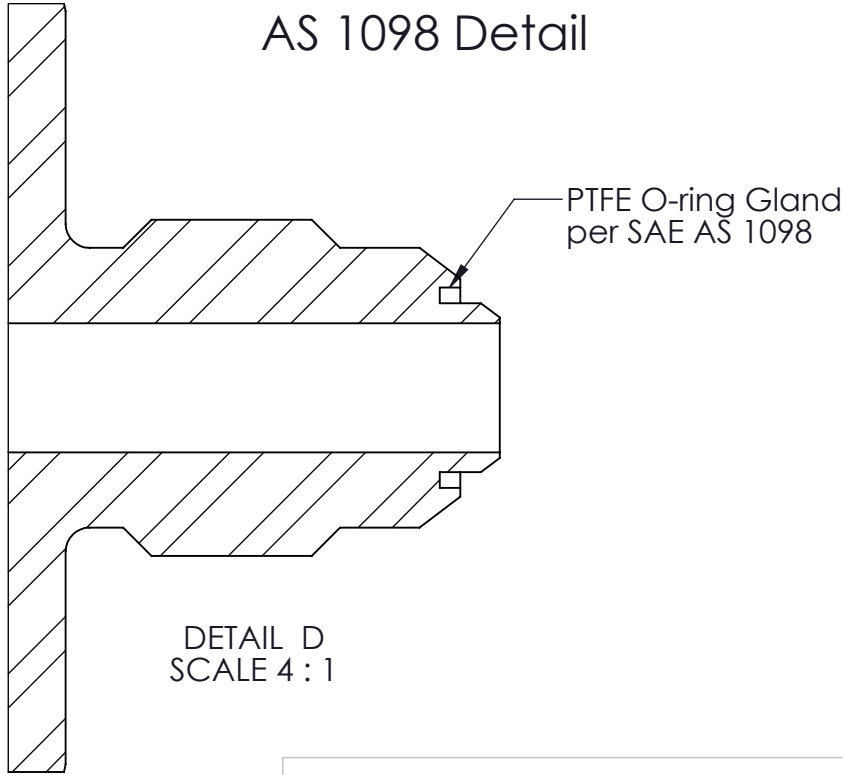
FDS Table					
Item #	Part #	Hex Size	+OAL	OAL Tolerance	
				+	-
4	FDS-1-2000	1"	0.448	0.030	0.080
	FDS-1.75-2000	1 3/4"	0.474	0.030	0.080
Add additional Item to BOM and weld as shown when FDS is selected as an accessory					
Add additional OAL and update tolerance to values shown on Sheet 2					



Lockwire & AS 1098 Example



SECTION C-C  
SCALE 2 : 1



UNLESS OTHERWISE SPECIFIED  
DIMENSIONS ARE IN INCHES

TOLERANCES ON:  
2 PLACE DECIMAL: .XX +/-0.01  
3 PLACE DECIMAL: .XXX +/-0.005  
ANGULAR: +/- 0.5°

PART TO BE FREE OF BURRS  
REMOVE SHARP EDGES (FILLET 0.005" - 0.020") MEASUREMENT NOT REQUIRED  
SURFACE FINISH 125 Ra UNLESS NOTED, VISUAL INSPECTION ONLY REQUIRED  
IF PART REVISION IS NOT SPECIFIED, PART REV. MATCHES DRAWING REV.  
NFC WORKMANSHIP STANDARD DMF01-24 APPLIES



TITLE:  
FILTER, INLINE, 4200 SERIES WIRE MESH

PART NUMBER:  
TABULATED

DWG NO.  
42XXTASSM

CAGE CODE  
59165

SIZE  
A3

DO NOT SCALE DRAWING

SCALE:1:1

SHEET 3 OF 3